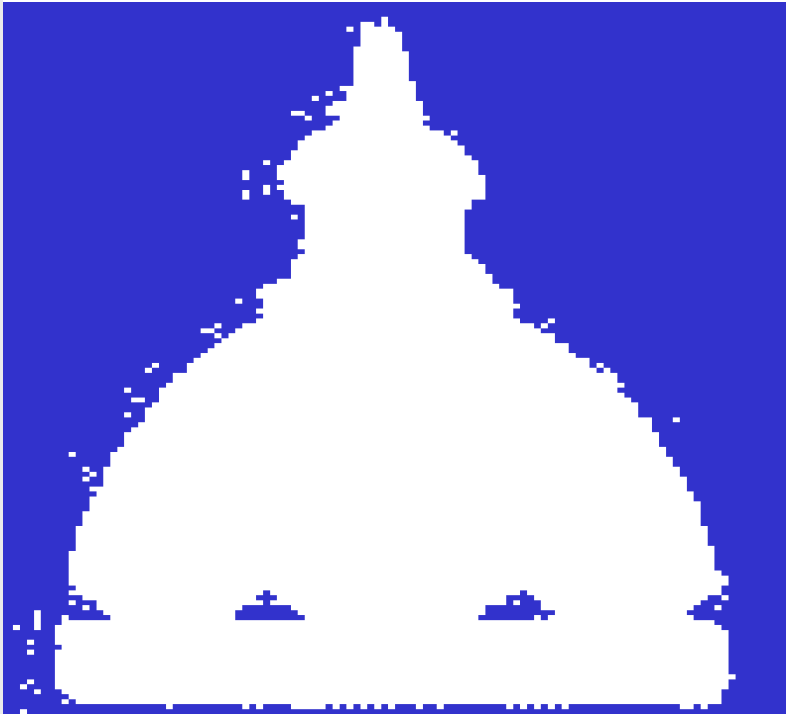


# Johns Hopkins Institutions



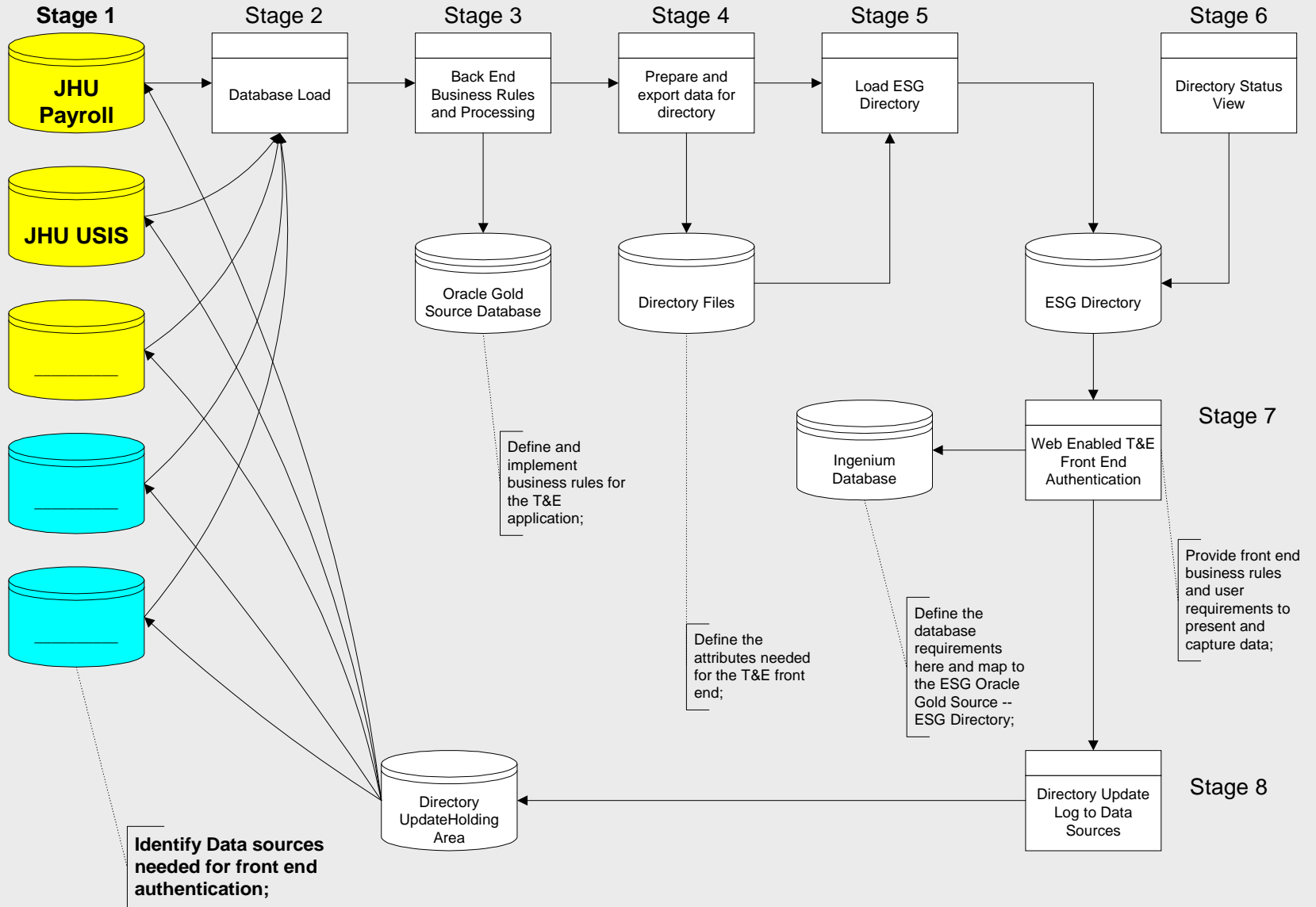
## I2-Middleware Early Adopter Progress Report

**Louise Miller-Finn**

**Hopkins ITS – Enterprise Services Group**

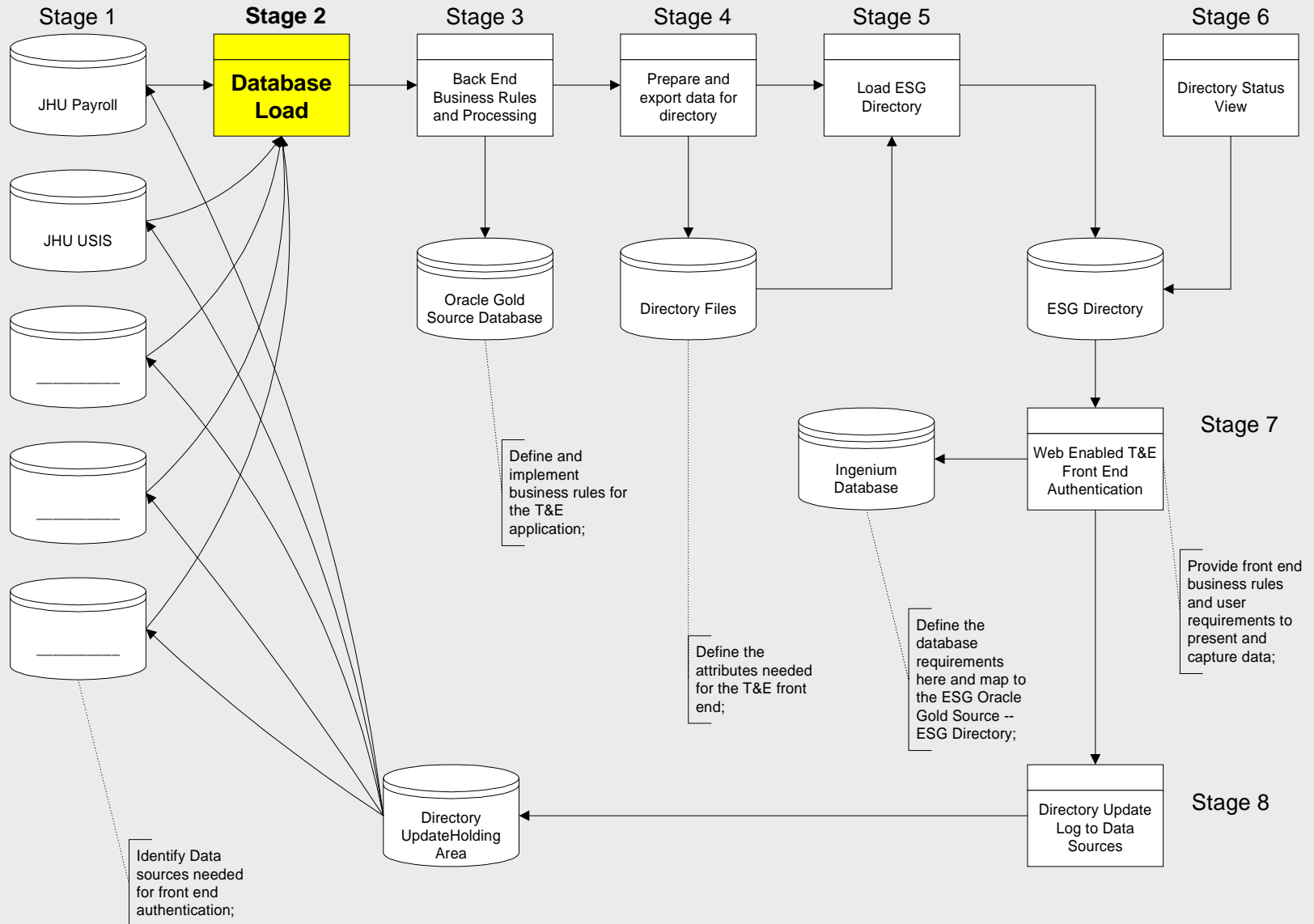
# Johns Hopkins Insitutions

October 2000



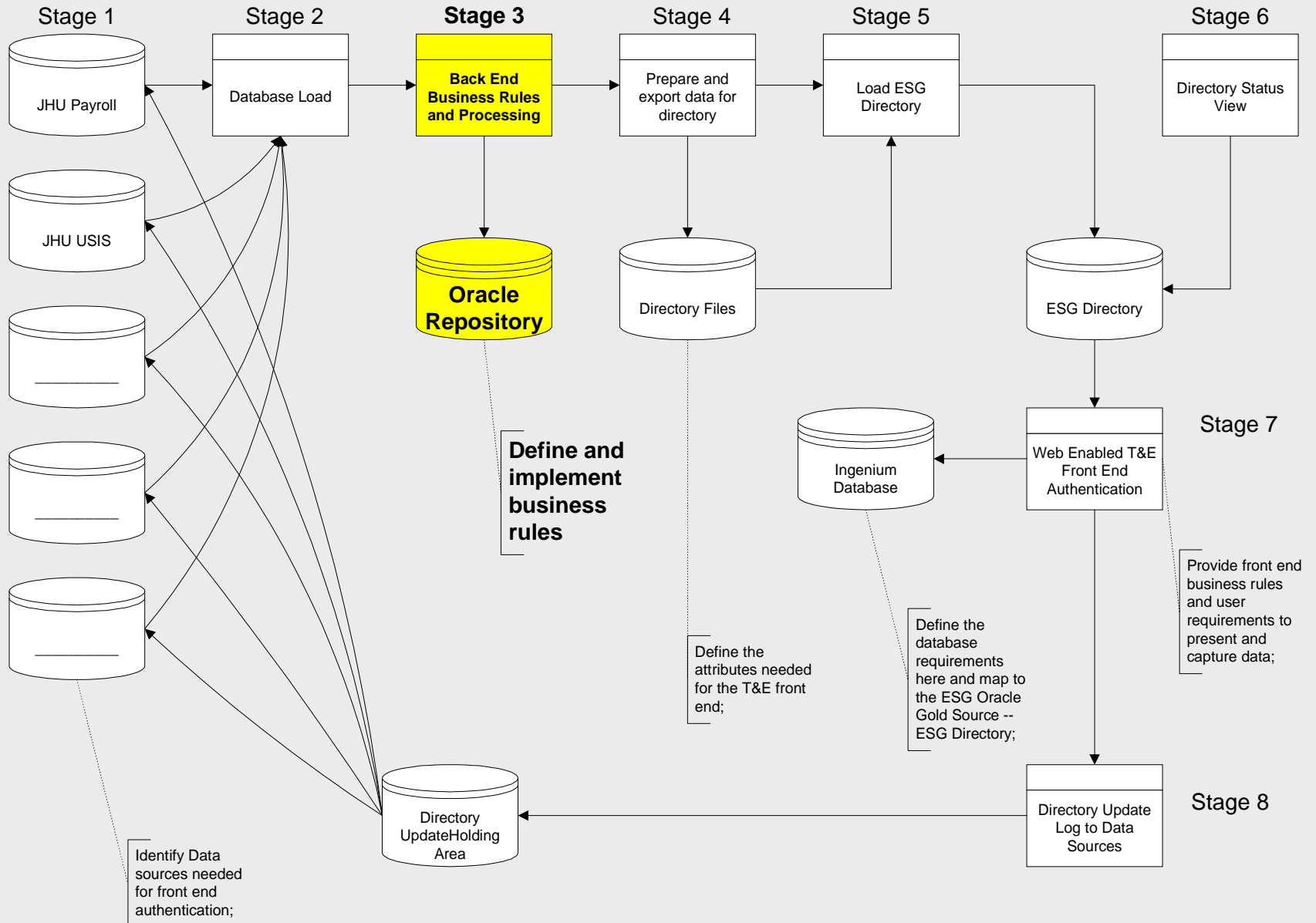
# Johns Hopkins Insititutions

October 2000



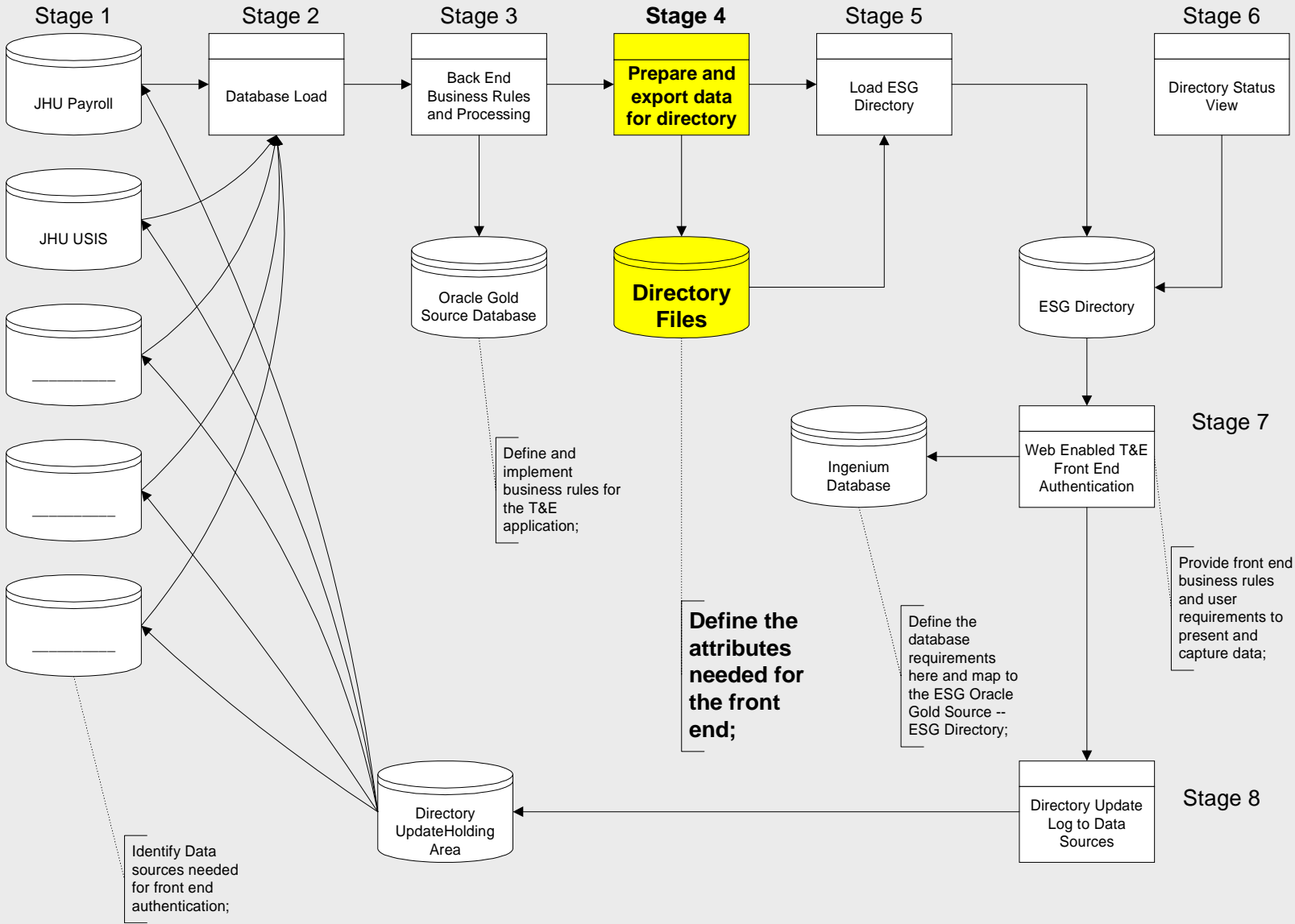
# Johns Hopkins Insitutions

October 2000



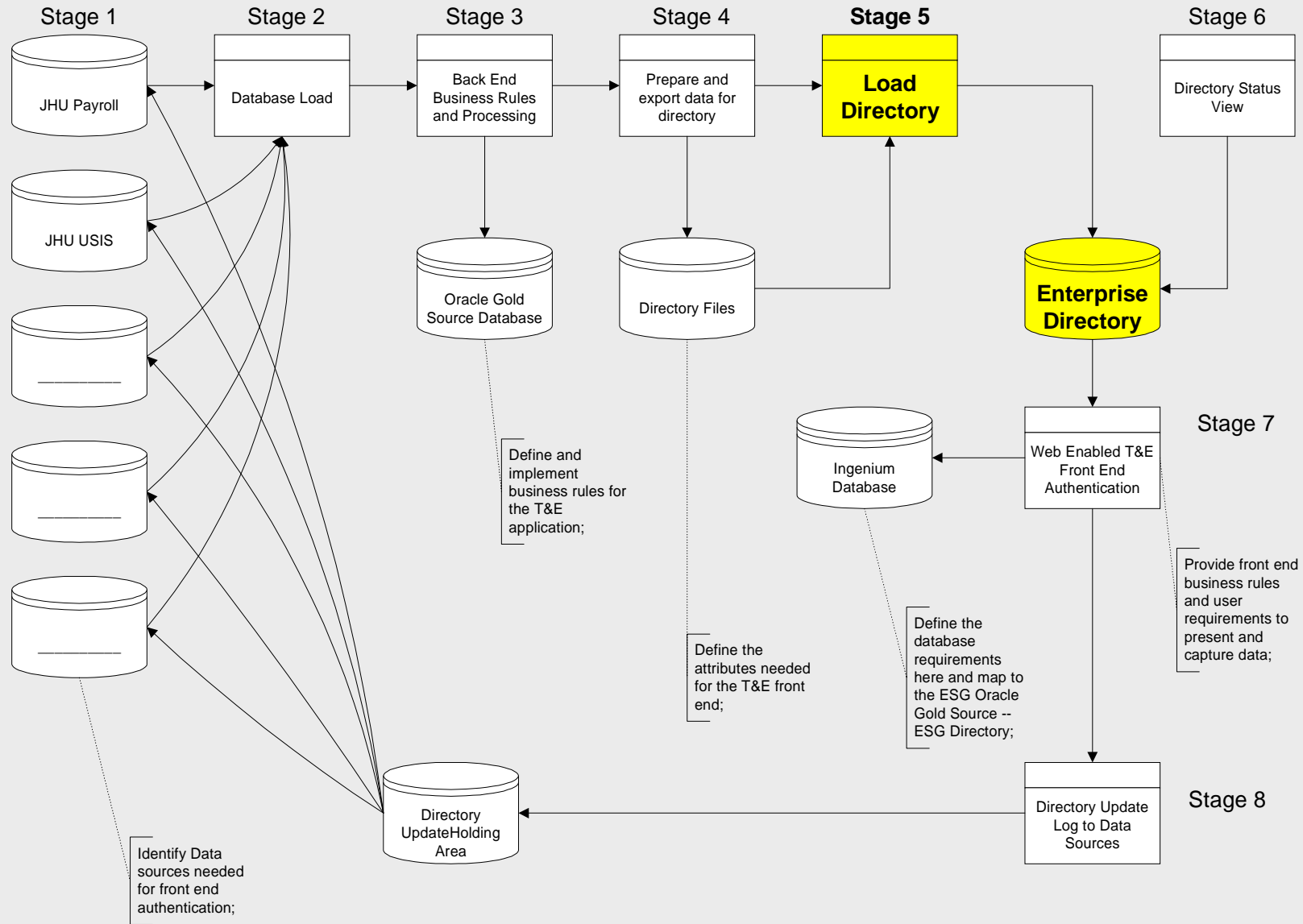
# Johns Hopkins Insitutions

*October 2000*

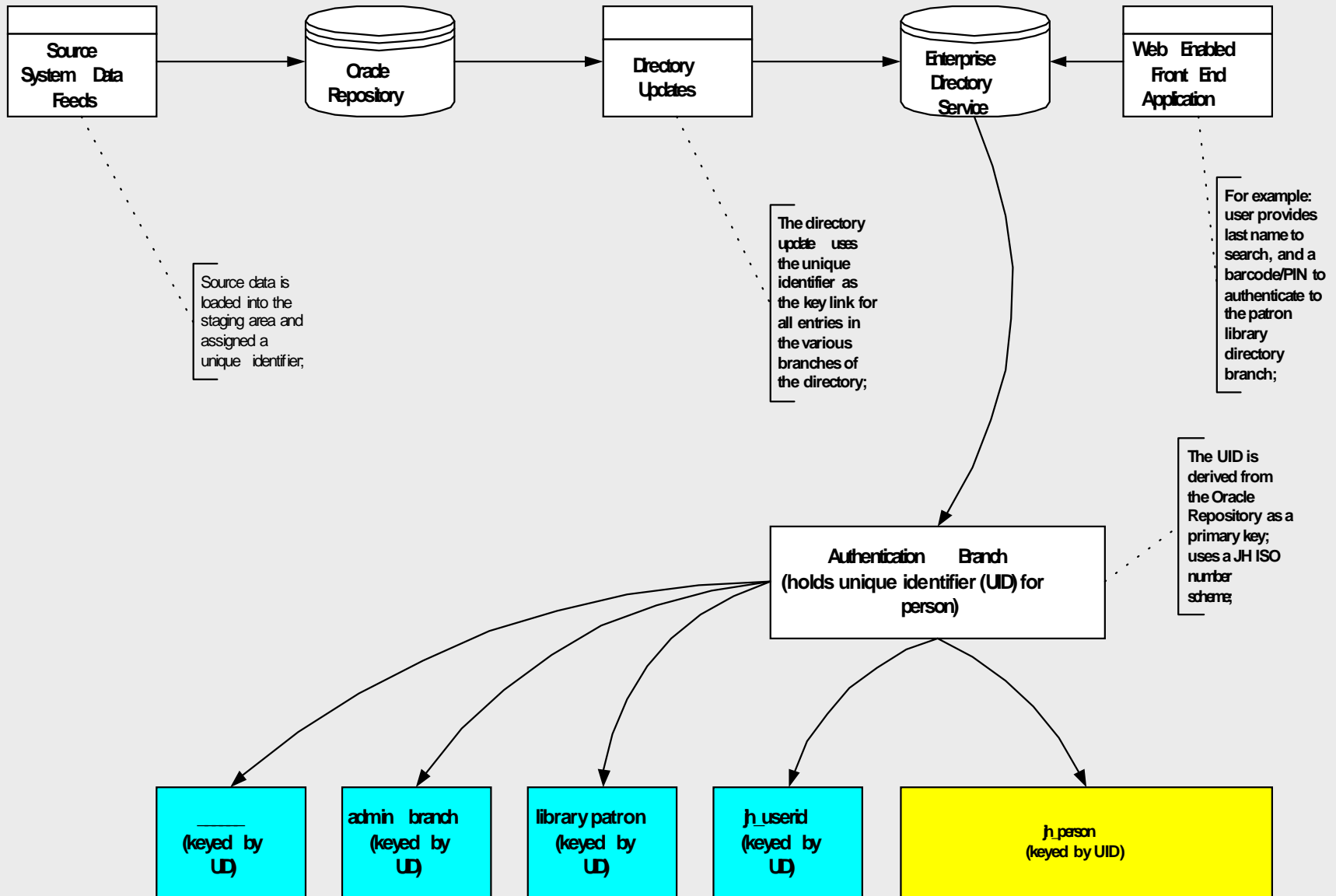


# Johns Hopkins Insitutions

October 2000

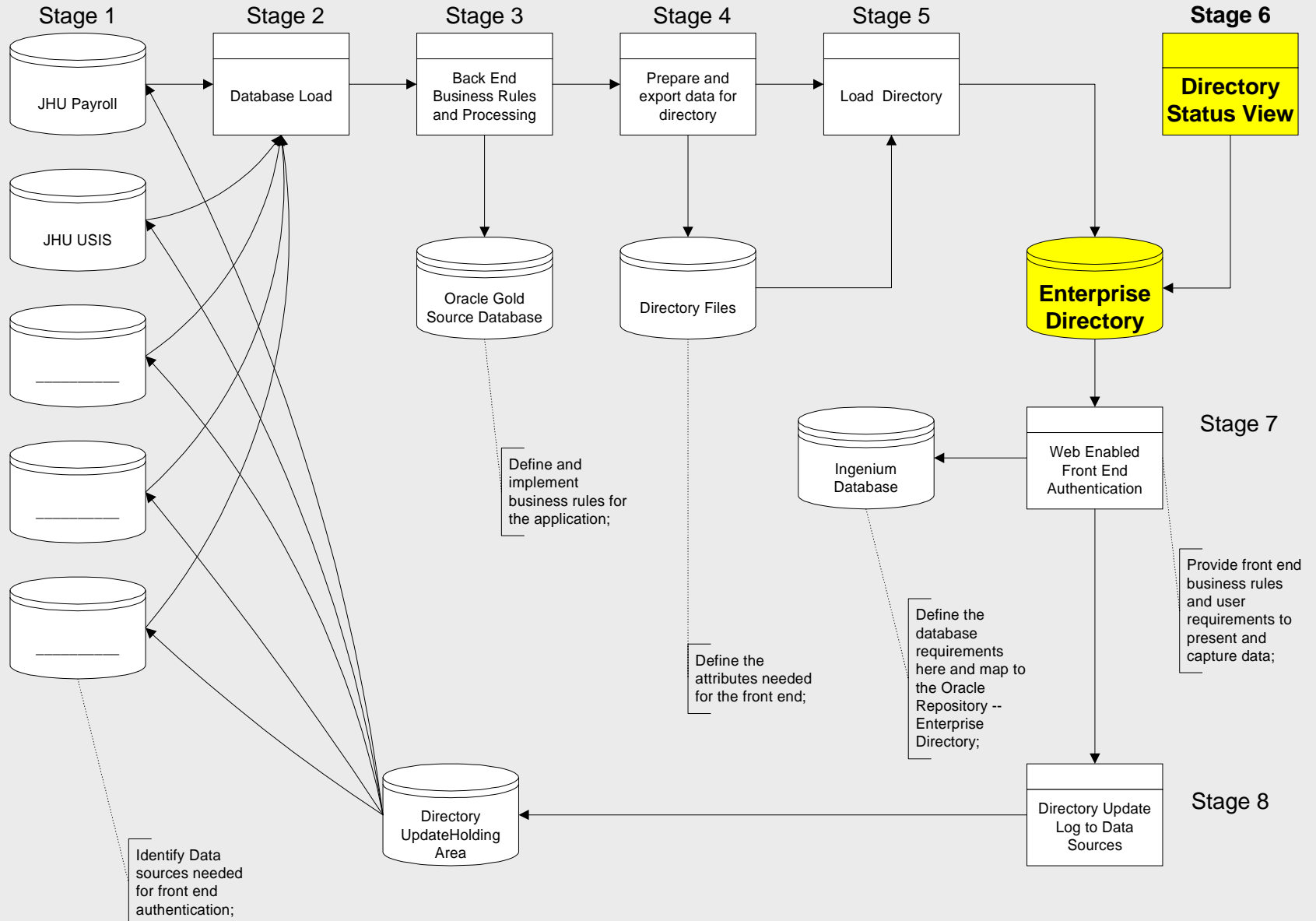


# Directory Structure



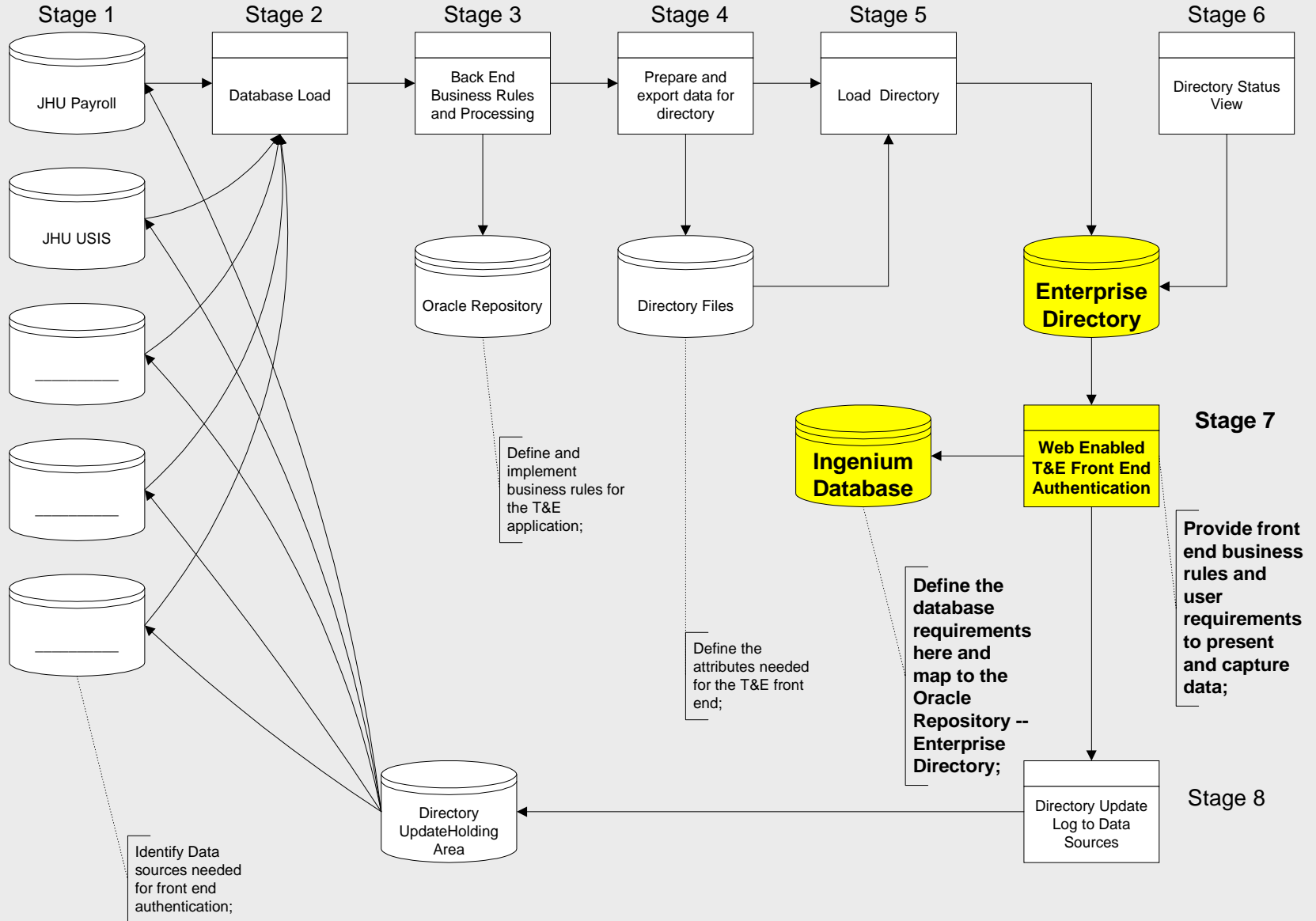
# Johns Hopkins Insitutions

October 2000



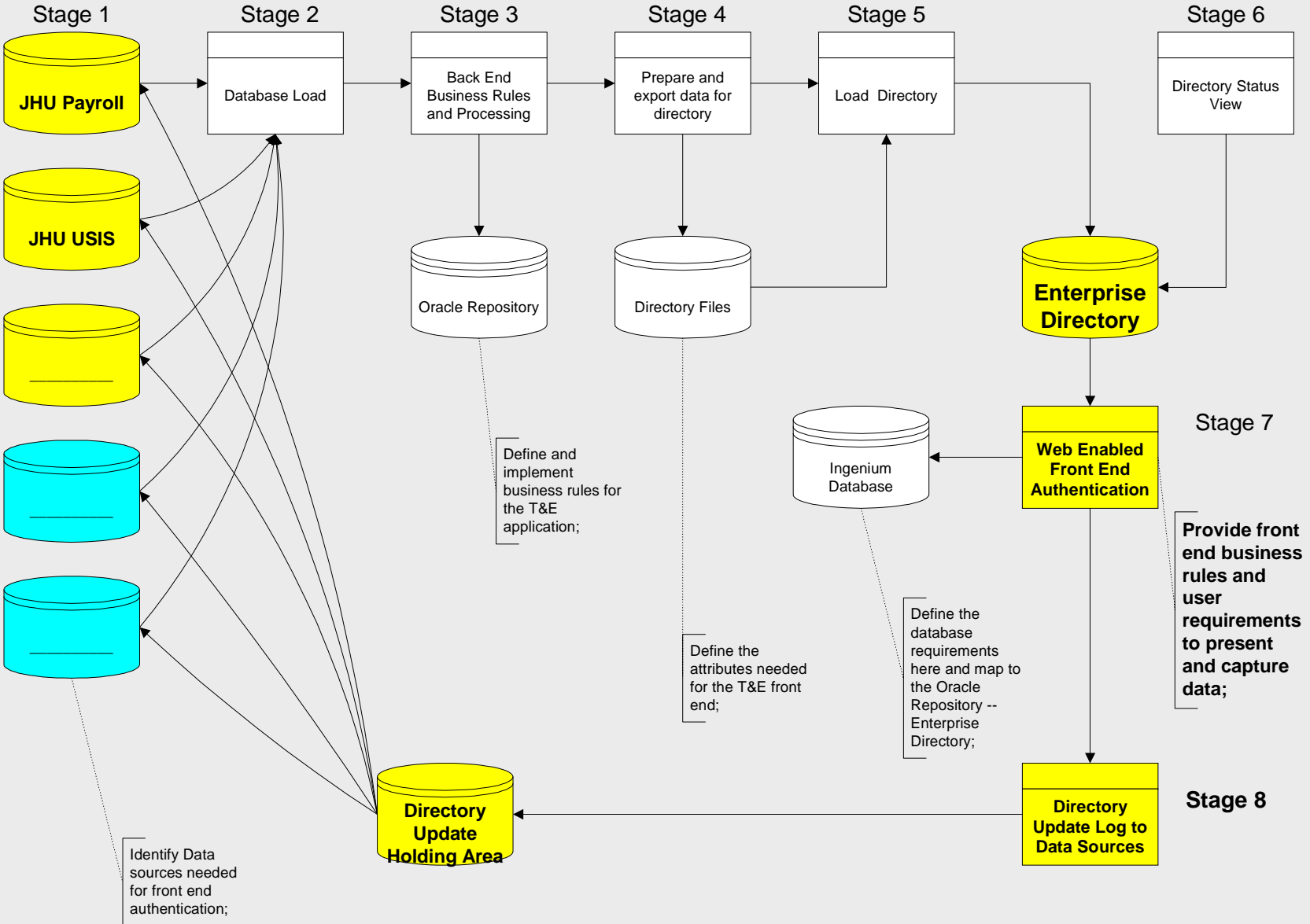
# Johns Hopkins Insitutions

October 2000



# Johns Hopkins Insitutions

*October 2000*



# Iterative Development Cycle

- Provide complete data-to-directory path;
- Push the data through one cycle to kickoff development process;
  - Review first iteration, and prepare next iteration with updates;
- Each iteration flushes more detail to the requirements in a rapid application development process adding data, business rules and/or policy changes;
- Document and store standard deployment procedure;
- Each iteration provides intense unit testing followed by QC test cycle;

# Summary

---

- Use of Iterative Development cycle;
- Create/maintain reusable scripts, procedures, templates and interfaces;
- Use of reduced set of tools:  
PLSQL, Perl, Cold Fusion
- Maintain KISS principle